

Description

The Programmer Module allows direct access to all VESDAnet devices on an VESDA smoke detection system. It allows configuration and status reporting of detectors, displays and interfaces and is required when installing, commissioning and maintaining a VESDA network. By incorporating a user friendly menu, navigation through the comprehensive features of VESDAnet is convenient and simple.

The programmer module is available as a hand-held device (with included DB15 serial cable) or can be mounted into a VESDA VLP or VESDA VLS detector, a remote mounting box or a 19" sub rack.

The two rows of large push buttons enable the user to log ON and navigate through the menu trees to the various command and parameter setting functions. The top row of keys is called "Soft Keys" and is assigned programming options appropriate to the screen being viewed.

Some of the parameters that can be accessed via the programmer include device status reporting, zone number and name allocation, flow normalisation, alarm threshold setting (day, night, weekend), initiation of AutoLearn, wiring order, relay testing and event log review.

Up to 14 assigned Users or Administrators with an individual 4 digit Personal Identification Number (PIN), and one Distributor, can log onto a VESDAnet system under one of three levels of access which are password protected:

- User (USR) is only able to view parameters, check status, alarms and reset the system.
- Administrator (ADM) has access to most commands and programming parameters.
- Distributor (DST) is the topmost level and has unlimited access to all commands and parameters in the system.
- Lost PIN numbers can be overcome by obtaining a once only pass number from your VESDA dealer.

The programmer automatically logs OFF when not in use for more than 10 minutes. The user is prompted with a beeping sound at 1 minute and at 15 seconds before log OFF. Any key may be pressed to cancel the automatic log OFF process.

Programming Functions

- System configuration
- Detector zone configuration and set up
- Detector zone control
- System status
- Smoke Threshold and Detector Sensitivity settings
- Event Log interrogation
- Commissioning and testing
- Set date and time
- Referencing
- AutoLearn™
- Passwords and user Configuration
- System fault diagnostic



Features

- User friendly menu system
- Supports multiple languages
- Single point access to entire VESDAnet system
- Alarm and fault simulation
- Shows wiring order
- Locates communications failures
- Password security
- Hand held or remote mounting
- Automatic Logoff when inactive
- Backlit LCD screen

Listings / Approvals

- FM
- VdS
- CFE
- ActivFire
- AFNOR
- CE
- UKCA

VESDA LCD PROGRAMMER

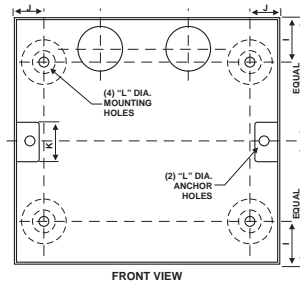
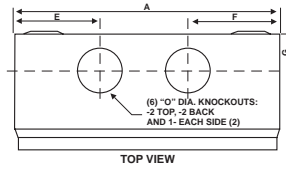
TECHNICAL SPECIFICATIONS



Specifications

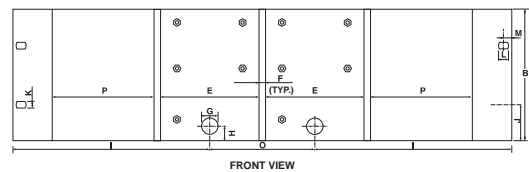
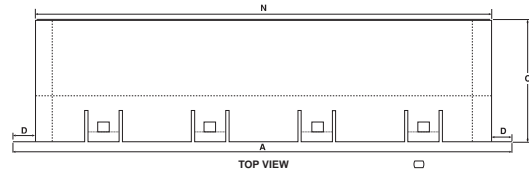
Supply Voltage		18 to 30 VDC		
		Module	Hand Held	Remote
Power (W) @ 24 VDC	Min	1.08 W	1.68	1.2
	Max	1.44 W		
Current (mA) @ 24 VDC	Min	45 mA	70 mA	50 mA
	Max	60 mA		
Dimensions (WHD)	mm	98 x 130 x 30	105 x 135 x 60	140 x 150 x 90
	in	3.9 x 5.1 x 1.21	4.1 x 5.3 x 2.4	5.5 x 5.9 x 3.5
Connections		Terminal connector to Head Processor Card or to expansion connector on another Xtralis VESDA device	15 pin D-type connector. VESDAnet cable required to connect to detector or remote VESDAnet socket	RS485 VESDAnet field wiring to Screw terminal blocks (0.2–2.5 mm ² , 30–12 AWG)

Remote Mounting Box



Dimensions	mm	in
A	140	5.5
B	130	5.1
C	70	2.75
D	60	2.36
E	44.5	1.75
F	48	1.9
G	23	0.9
H	25	0.98
I	27.5	1.1
J	16.5	0.65
K	25	0.98
L	64	2.52
M	18	0.7
N	23	0.91
O	26	1.0

19" Sub Rack



Dimensions	mm	in
A	482	19
B	128	5
C	120	4.75
D	21	0.82
E	97.2	3.82
F	64	2.5
G	16	0.62
H	14	0.55
I	130	5.1
J	36	1.4
K	7	0.28
L	10	0.39
M	8	0.31
N	440	17.3
O	102	4
P	98.5	4

Ordering Information

Ordering Code	Description
VRT-100	Remote Programmer
VSP-012	Recessed Mounting Kit (Optional)
VHH-100	Hand-Held Programmer
Contact Xtralis	19" Sub Rack Configuration

Screen Display	70 mm x 37 mm (2.75"x 1.45") Full Graphic display, Large characters 8 lines, 21 characters per line Adjustable backlit screen with contrast control
Inactivity Time Out	10 minutes (Defaults to log on screen) Beeps at 1 minute and then 15 seconds before Logoff
Push Button Keys	2 Rows x 4 keys, each 19 mm x 12 mm (0.75" x 0.50")
Security Access	3 characters User ID 4 digit Personal Identification Number (PIN) per User
Number of User Levels	10 USR, 3 ADM, 1 DST
Default ID	USR = User (Operator level) ADM = Administrator (Access most functions) DST = VESDA Distributor (Access all functions)
Operating Conditions	Tested to: -10°C–55°C (14°F–131°F) Recommended Detector Ambient: 0°C–39°C (32°–103°F) Humidity: 10%–95% RH, non-condensing
System Functions Accessed	Status of software version Descriptive Alarms & Faults Smoke & Flow readings Push-Button lockout Display name (21 characters) Alarm Thresholds (Alert, Action, Fire 1 & Fire 2) Alarms delays (0–60 seconds) Day/Night/Weekend/Holiday Options Event Log (up to 18,000 events) Zone number and name (21 characters) Pipes in use (pipe 1 to 4) Aspirator Speed & Flow control Confirmation of filter change Relay configuration Referencing Auto Learn™
Addressed Devices	250 VESDA devices maximum
VESDA addressed Devices	VESDA VLP: Detectors & Displays VESDA VLS: Detectors & Displays VESDA VLC: Detectors & Displays VESDA VLF with Vnet card: Detectors & Displays HLI (High Level Interface) Relay modules: Remote Relays